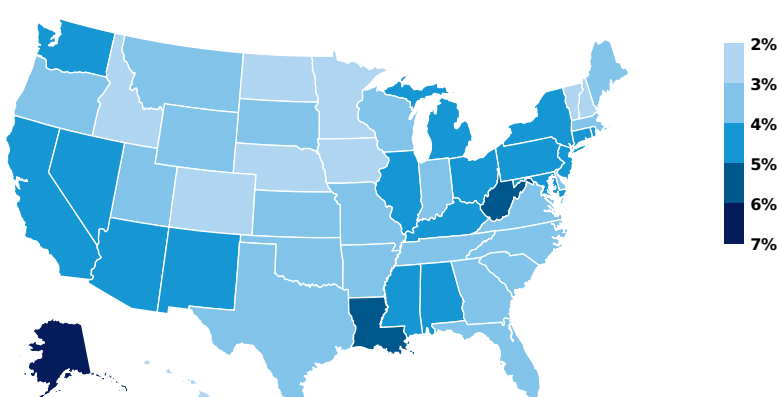
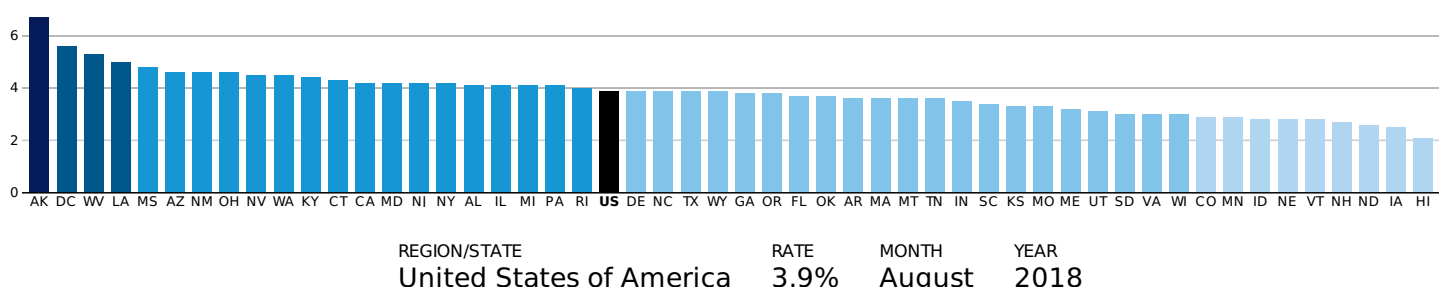


EMPLOYMENT

Breaking down state data on unemployment rates, total (nonfarm) payroll employment, and government employment.

Unemployment Rate (percent, seasonally adjusted)

The national unemployment rate was 3.9 percent as of August 2018.



Source: Bureau of Labor Statistics. (<http://www.bls.gov/news.release/laus.t03.htm>)

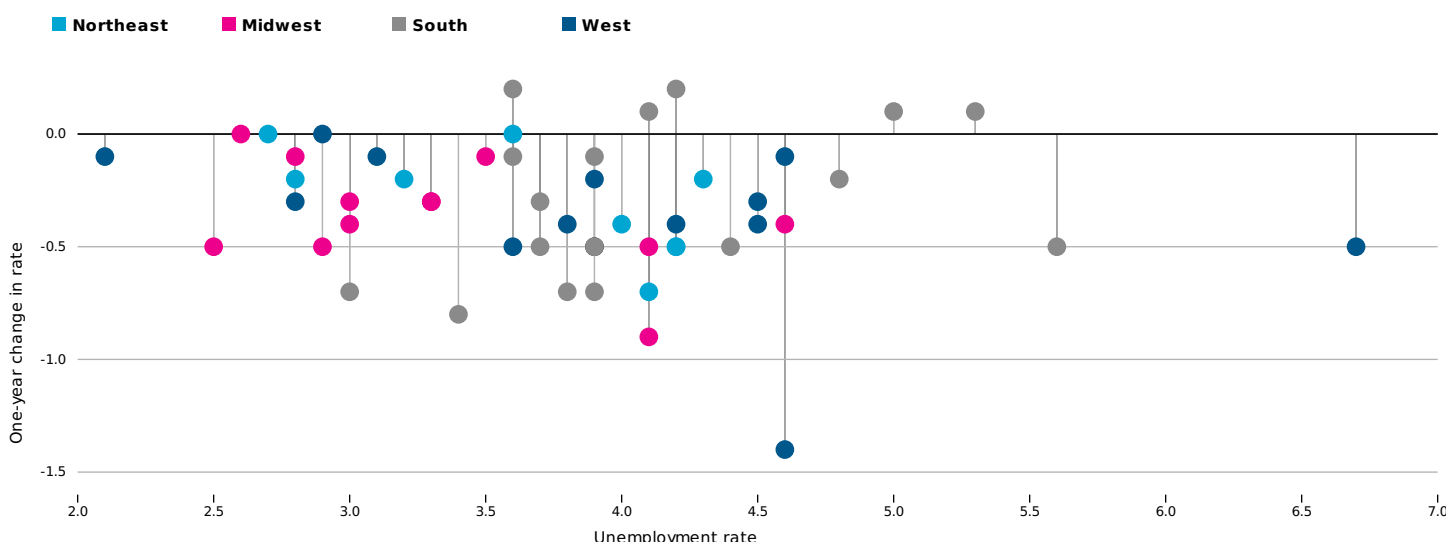
The national unemployment rate was 3.9 percent in August 2018. Hawaii's 2.1 percent rate was the lowest of any state. The August unemployment rate was also below 3.0 percent in eight other states: Colorado, Idaho, Iowa, Minnesota, Nebraska, New Hampshire, North Dakota, and Vermont. In total, the August unemployment rate was at or below 4.0 percent in 31 states.

Alaska's 6.7 percent unemployment rate was the highest of any state. The next highest rates were in the District of Columbia (5.6 percent), West Virginia (5.3 percent), and Louisiana (5.0 percent).

Unemployment Rate: Level vs. One-Year Change

The national unemployment rate decreased 0.5 percentage points to a value of 3.9 percent between August 2017 and August 2018.

REGION/STATE: UNITED STATES OF AMERICA
 RATE: 3.9%
 CHANGE: -0.5 percentage points



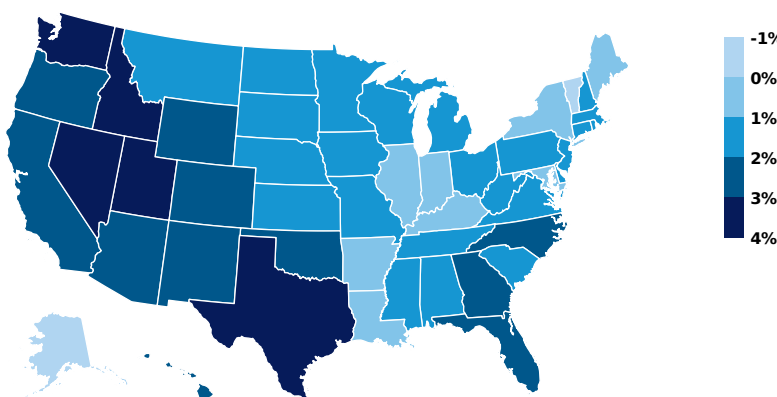
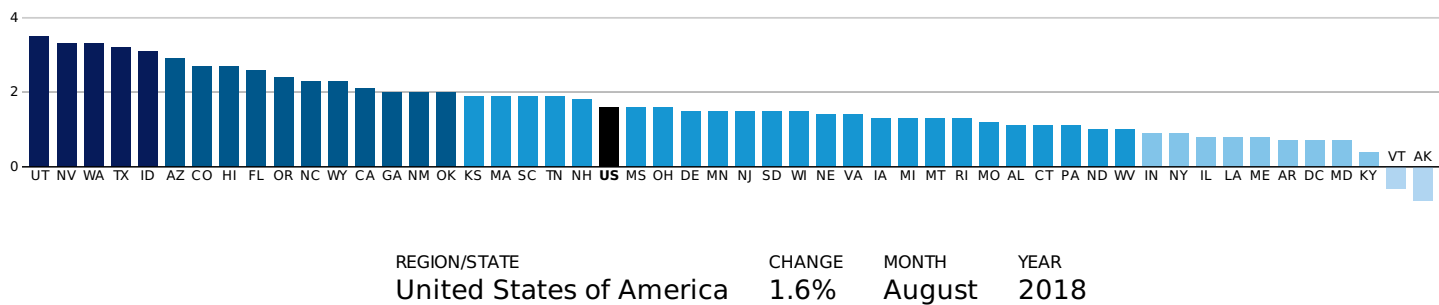
Source: Both datasets from the Bureau of Labor Statistics. (<http://www.bls.gov/news.release/laus.t03.htm>)

The national unemployment rate fell 0.5 percentage points between August 2017 and August 2018. The unemployment rate fell the most over the year in New Mexico (-1.4 percentage points) and Illinois (-0.9 percentage points). The unemployment rate also fell more than 0.5 percentage points in Delaware, Georgia, Pennsylvania, South Carolina, and Virginia.

The unemployment rate increased over the year in five states: Maryland and Tennessee (both 0.2 percentage points); and Alabama, Louisiana, and West Virginia (each 0.1 percentage points).

Total Employment (percent change year over year)

Total (public and private) nonfarm payroll employment increased 1.6 percent from August 2017 to August 2018.



Source: Bureau of Labor Statistics. (<http://www.bls.gov/news.release/laus.t05.htm>)

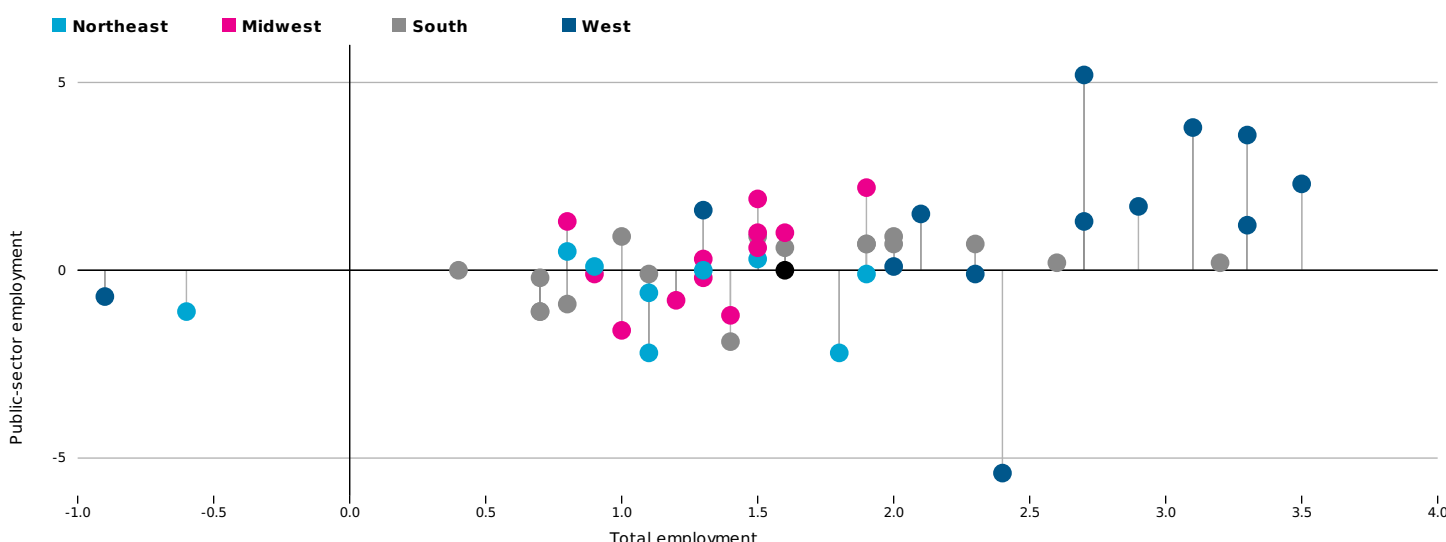
Total national (public and private) nonfarm payroll employment increased 1.6 percent from August 2017 to August 2018. Among the states, the largest year-over-year increases in total employment were in Utah (3.5 percent), Nevada and Washington (both 3.3 percent), Texas (3.2 percent), and Idaho (3.1 percent). Total employment increased more than 2.0 percent in 13 states.

Total employment declined over the year in only Alaska (-0.9 percent) and Vermont (-0.6 percent).

Total Employment vs. Public Employment

Total public-sector employment did not change from August 2017 to August 2018, staying well below the 1.6 percent increase in total employment.

REGION/STATE: UNITED STATES OF AMERICA
 TOTAL: 1.6%
 PUBLIC: 0.0%



Source: Both datasets from the Bureau of Labor Statistics. (<http://www.bls.gov/news.release/laus.t05.htm>)

Nationally, total public-sector employment did not change from August 2017 to August 2018. Among the states, employment increased the most in Hawaii (5.2 percent), Idaho (3.8 percent), and Nevada (3.6 percent). In total, 12 states saw public employment increase more than 1.0 percent over the year.

Public employment declined over the year in 18 states and the District of Columbia, with the largest declines in Oregon (-5.4 percent) and Connecticut and New Hampshire (both -2.2 percent). Public employment also fell more than 1.0 percent in the District of Columbia, Maryland, Nebraska, North Dakota, Vermont, and Virginia.

[Click here for a printer-friendly PDF](#)

Note: The unemployment rate is from a US Bureau of Labor Statistics survey based on place of residence. The employment data are from a US Bureau of Labor Statistics survey based on place of work. All data are seasonally adjusted. This page is not comparable to the Bureau of Labor Statistics's press release, because that release as of August 2018 highlights only changes that are statistically significant.