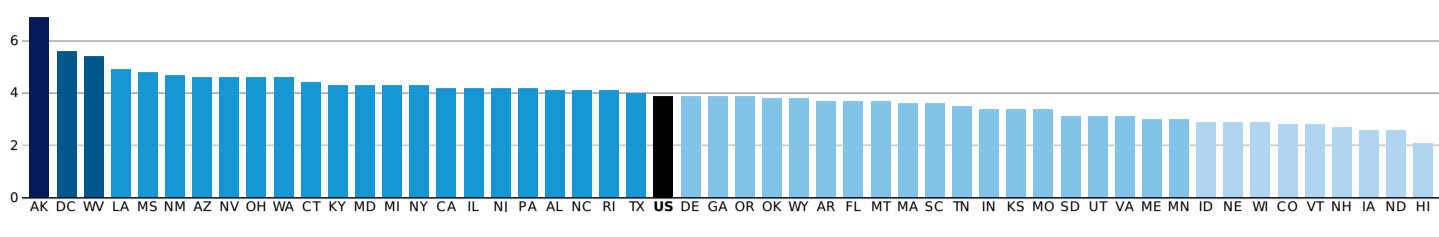


EMPLOYMENT

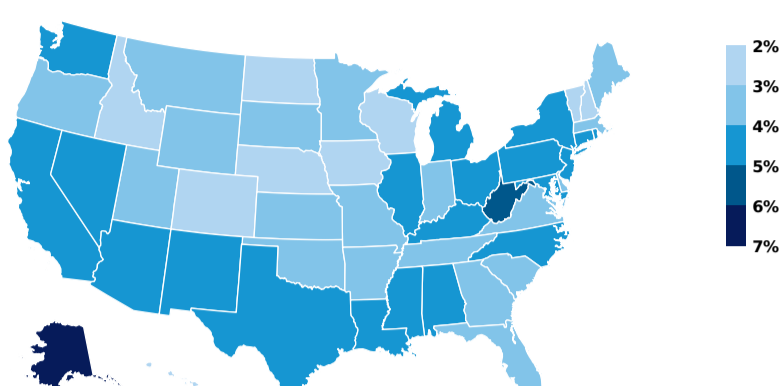
Breaking down state data on unemployment rates, total (nonfarm) payroll employment, and government employment.

Unemployment Rate (percent, seasonally adjusted)

The national unemployment rate was 3.9 percent as of July 2018.



REGION/STATE: United States of America
 RATE: 3.9%
 MONTH: July
 YEAR: 2018



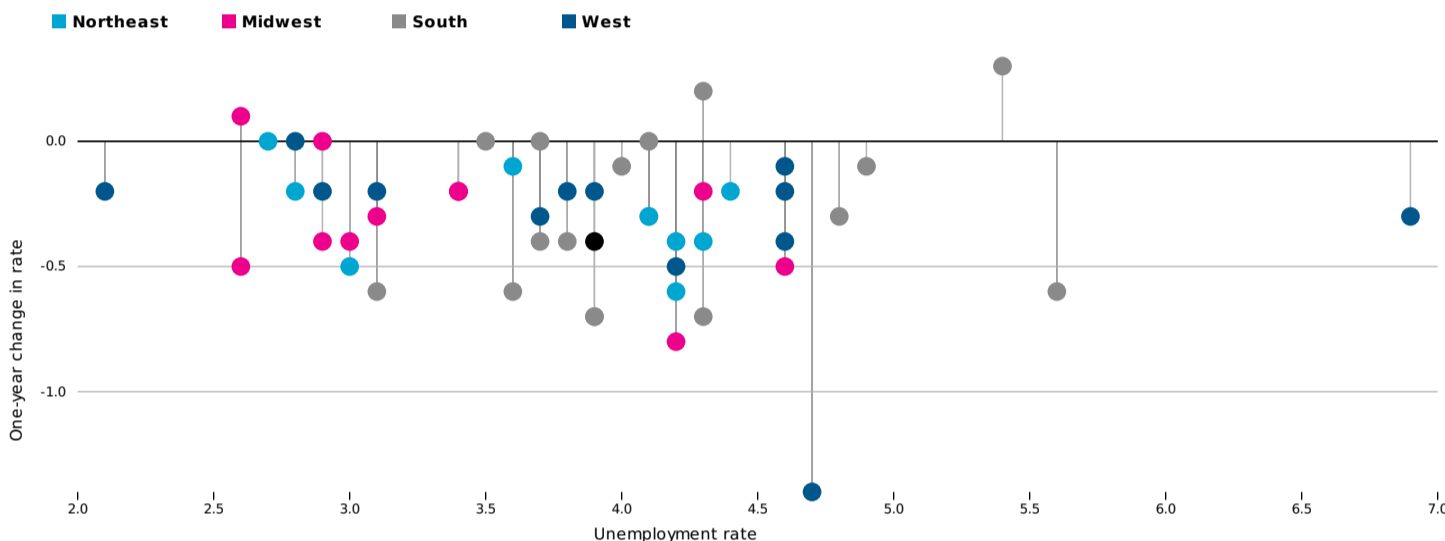
Source: Bureau of Labor Statistics. (<http://www.bls.gov/news.release/laus.t03.htm>)

The national unemployment rate was 3.9 percent in July 2018. Hawaii's 2.1 percent unemployment rate was the lowest of any state. The July unemployment rate was also below 3.0 percent in eight other states: Colorado, Idaho, Iowa, Nebraska, New Hampshire, North Dakota, Vermont, and Wisconsin. The July unemployment rate was at or below 4.0 percent in 29 states. Alaska's 6.9 percent unemployment rate was the highest of any state. The July unemployment rate was also greater than 5.0 percent in the District of Columbia (5.6 percent) and West Virginia (5.4 percent).

Unemployment Rate: Level vs. One-Year Change

The national unemployment rate decreased 0.4 percentage points to a value of 3.9 percent between July 2017 and July 2018.

REGION/STATE: UNITED STATES OF AMERICA
 RATE: 3.9%
 CHANGE: -0.4 percentage points



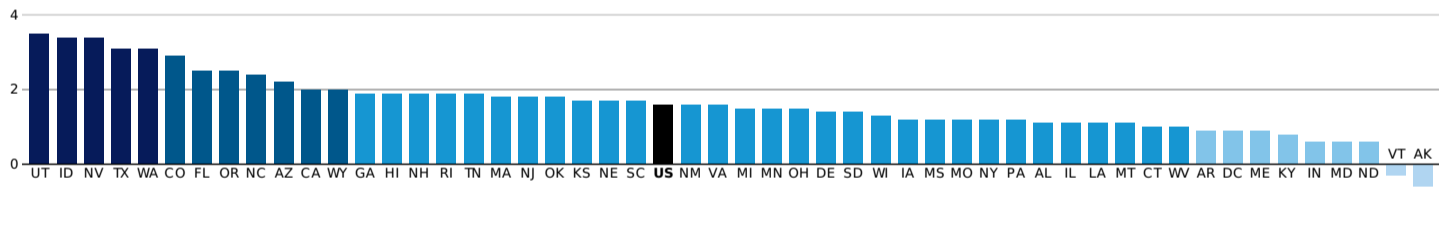
Source: Both datasets from the Bureau of Labor Statistics. (<http://www.bls.gov/news.release/laus.t03.htm>)

The national unemployment rate fell 0.4 percentage points between July 2017 and July 2018. The unemployment rate fell the most over the year in New Mexico (-1.4 percentage points) and Illinois (-0.8 percentage points). The unemployment rate fell 0.5 percentage points or more in 12 states and the District of Columbia.

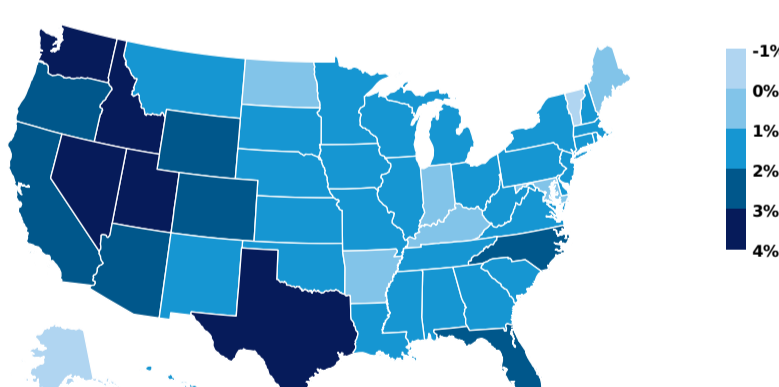
The unemployment rate increased over the year in just three states: West Virginia (0.3 percentage points), Maryland (0.2 percentage points), and North Dakota (0.1 percentage points).

Total Employment (percent change year over year)

Total (public and private) nonfarm payroll employment increased 1.6 percent from July 2017 to July 2018.



REGION/STATE: United States of America
 CHANGE: 1.6%
 MONTH: July
 YEAR: 2018



Source: Bureau of Labor Statistics. (<http://www.bls.gov/news.release/laus.t05.htm>)

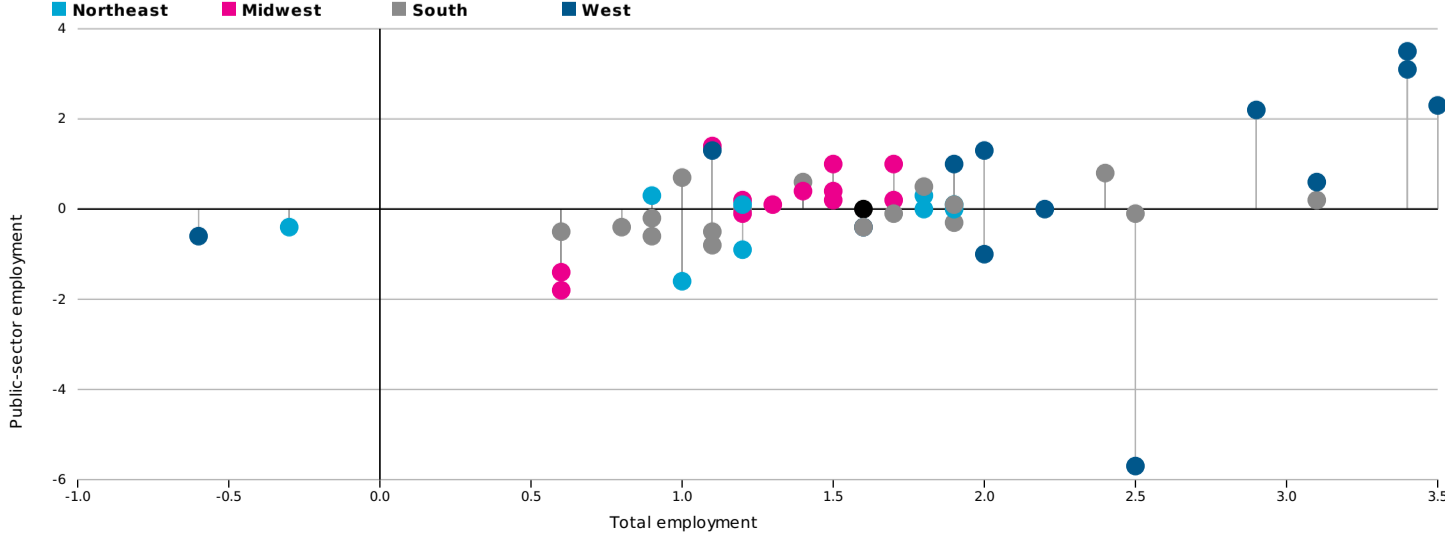
Total national (public and private) nonfarm payroll employment increased 1.6 percent from July 2017 to July 2018. Among the states, the largest year-over-year increases in total employment were in Utah (3.5 percent), Idaho and Nevada (both 3.4 percent), and Texas and Washington (both 3.1 percent). Total employment increased 2.0 percent or more in 12 states.

Total employment declined over the year in only Alaska (-0.6 percent) and Vermont (-0.3 percent).

Total Employment vs. Public Employment

Total public-sector employment did not change from July 2017 to July 2018, staying well below the 1.6 percent increase in total employment.

REGION/STATE: UNITED STATES OF AMERICA
 TOTAL: 1.6%
 PUBLIC: 0.0%



Source: Both datasets from the Bureau of Labor Statistics. (<http://www.bls.gov/news.release/laus.t05.htm>)

Nationally, total public-sector employment did not change from July 2017 to July 2018. Among the states, public employment increased the most in Nevada (3.5 percent) and Idaho (3.1 percent). In total, 10 states saw public employment increase 1.0 percent or more over the year.

Public employment declined over the year in 19 states and the District of Columbia, with Oregon seeing the

largest decline (-5.7 percent). Public employment also fell 1.0 percent or more in Connecticut, Indiana, North Dakota, and Wyoming.

[Click here for a printer-friendly PDF](#)

Note: The unemployment rate is from a US Bureau of Labor Statistics survey based on place of residence. The employment data are from a US Bureau of Labor Statistics survey based on place of work. All data are seasonally adjusted. This page is not comparable to the Bureau of Labor Statistics's press release, because that release as of July 2018 highlights only changes that are statistically significant.