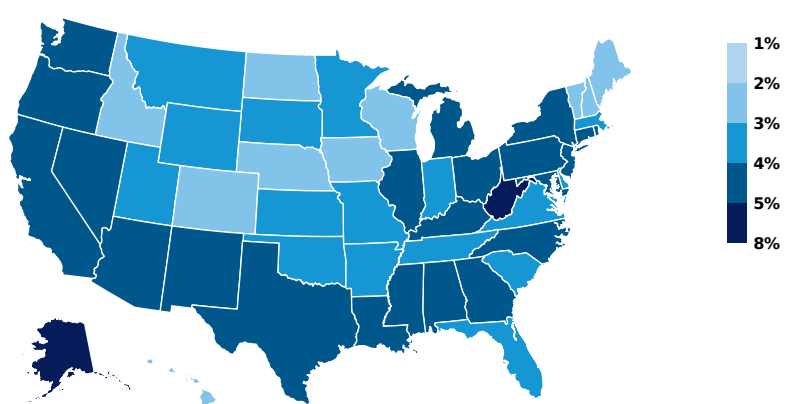
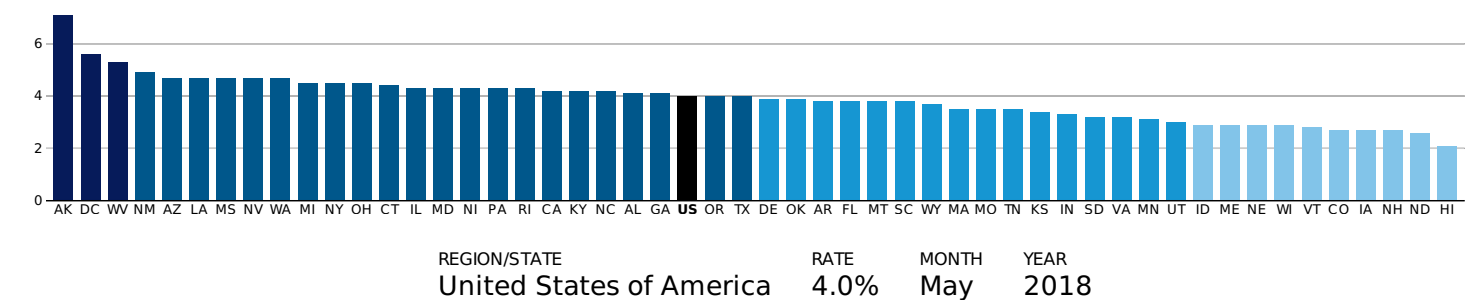


# EMPLOYMENT

Breaking down state data on unemployment rates, total (nonfarm) payroll employment, and government employment.

## Unemployment Rate (percent, seasonally adjusted)

The national unemployment rate was 4.0 percent as of May 2018.



Source: Bureau of Labor Statistics. (<http://www.bls.gov/news.release/laus.t03.htm>)

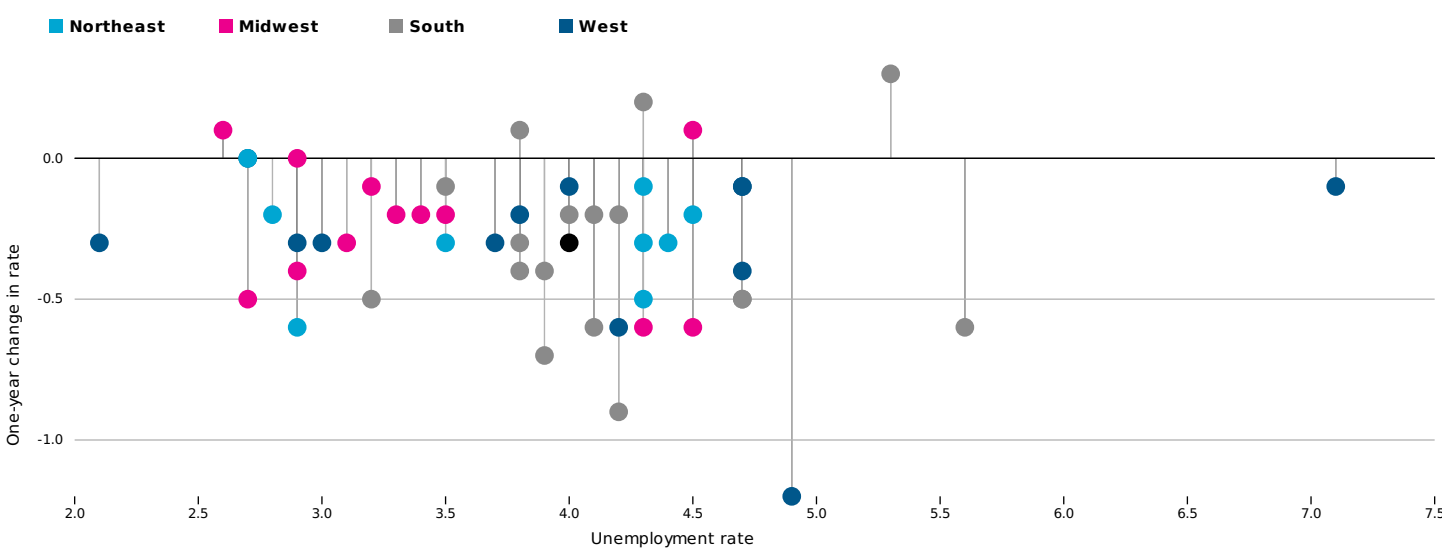
The national unemployment rate was 3.8 percent in May 2018. Hawaii's 2.0 percent unemployment rate was the lowest of any state. The May unemployment rate was below 3.0 percent in nine other states: Colorado, Idaho, Iowa, Maine, Nebraska, New Hampshire, North Dakota, Vermont, and Wisconsin. In total, the May unemployment rate was at or below 4.0 percent in 27 states.

Alaska's 7.2 percent rate was the highest of any state. The May unemployment rate was also greater than 5.0 percent in the District of Columbia (5.6 percent), West Virginia (5.4 percent), and New Mexico (5.1 percent).

## Unemployment Rate: Level vs. One-Year Change

The national unemployment rate decreased 0.3 percentage points to a value of 4.0 percent between May 2017 and May 2018.

REGION/STATE: UNITED STATES OF AMERICA  
 RATE: 4.0%  
 CHANGE: -0.3 percentage points



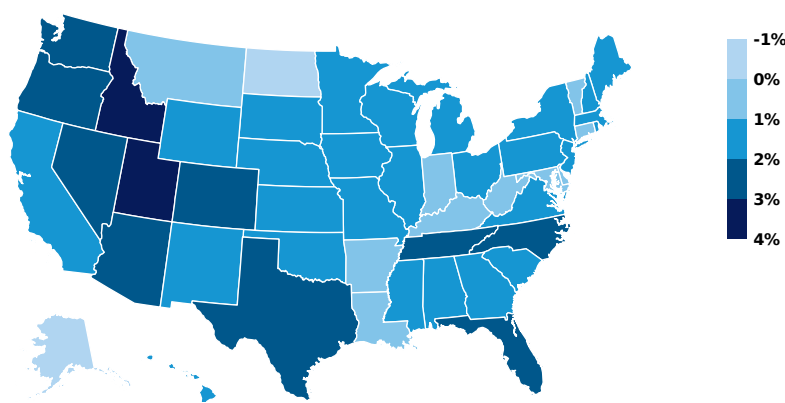
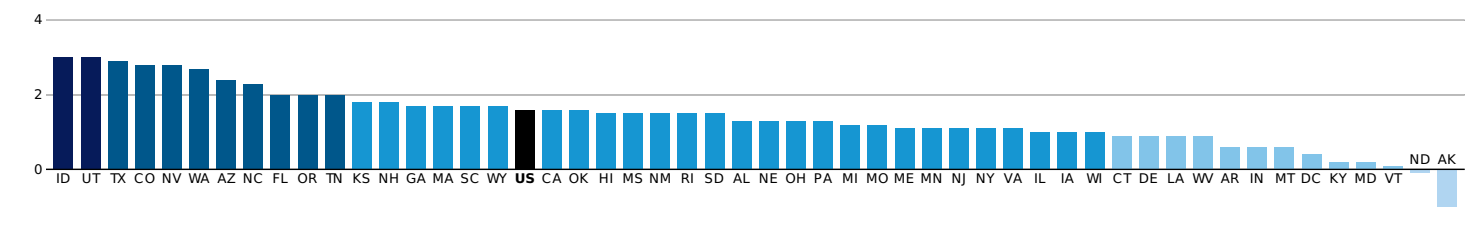
Source: Both datasets from the Bureau of Labor Statistics. (<http://www.bls.gov/news.release/laus.t03.htm>)

The national unemployment rate fell 0.5 percentage points between May 2017 and May 2018. The unemployment rate fell the most in New Mexico (-1.1 percentage points) and Kentucky (-1.0 percentage points). In total, the unemployment rate fell 0.5 percentage points or more in 14 states and the District of Columbia.

The unemployment rate increased over the year in seven states. The largest increase was in West Virginia, where the unemployment rate increased 0.4 percentage points. Alaska, Arkansas, Colorado, Maryland, Michigan, and North Dakota also saw their unemployment rates increase over the year.

## Total Employment (percent change year over year)

Total (public and private) nonfarm payroll employment increased 1.6 percent from May 2017 to May 2018.



Source: Bureau of Labor Statistics. (<http://www.bls.gov/news.release/laus.t05.htm>)

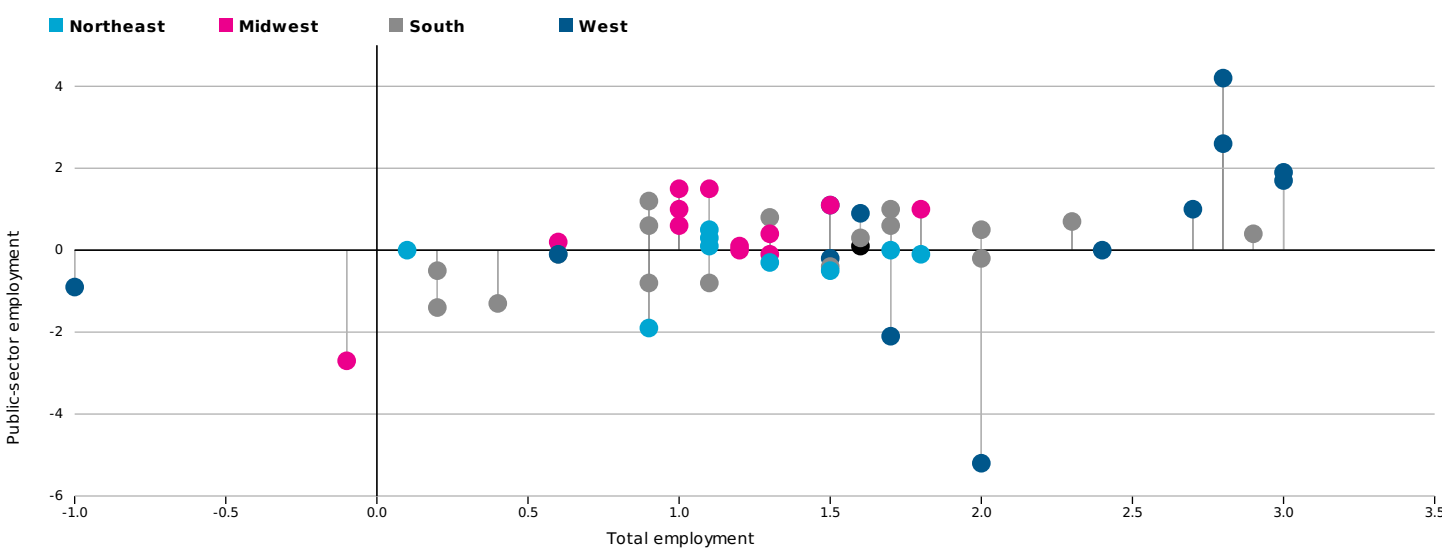
Total national (public and private) nonfarm payroll employment increased 1.6 percent from May 2017 to May 2018. Among the states, the largest year-over-year increases in total employment were in Utah (3.4 percent) and Idaho (3.1 percent). Total employment increased more than 2.0 percent or more in 11 states.

Total employment declined year over year in only two states: North Dakota (-0.5 percent) and Alaska (-0.2 percent).

## Total Employment vs. Public Employment

Total public-sector employment increased 0.1 percent from May 2017 to May 2018, staying well below the 1.6 percent increase in total employment.

REGION/STATE: UNITED STATES OF AMERICA  
 TOTAL: 1.6%  
 PUBLIC: 0.1%



Source: Both datasets from the Bureau of Labor Statistics. (<http://www.bls.gov/news.release/laus.t05.htm>)

Nationally, total public-sector employment was fairly constant, increasing only 0.1 percent from May 2017 to May 2018, and was within 1.0 percent of 2017 levels in 33 states. Public employment increased the most in West Virginia (5.6 percent), Nevada (3.8 percent), Vermont (2.4 percent), and Idaho (2.0 percent). Nine other states saw public employment increase 1.0 percent or more over the year.

Public employment declined over the past year in 14 states and the District of Columbia. The largest declines were in Oregon (-5.1 percent) and North Dakota (-2.5 percent). Public employment declined at least 1.0 percent in two other states and the District of Columbia.

---

[Click here for a printer-friendly PDF](#)

Note: The unemployment rate is from a US Bureau of Labor Statistics survey based on place of residence. The employment data are from a US Bureau of Labor Statistics survey based on place of work. All data are seasonally adjusted. This page is not comparable to the Bureau of Labor Statistics's press release, because that release as of May 2018 highlights only changes that are statistically significant.