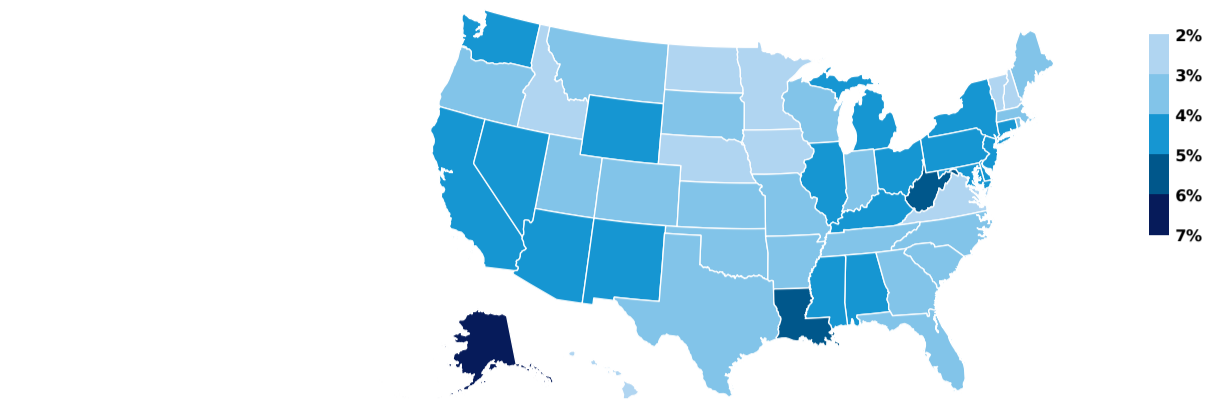
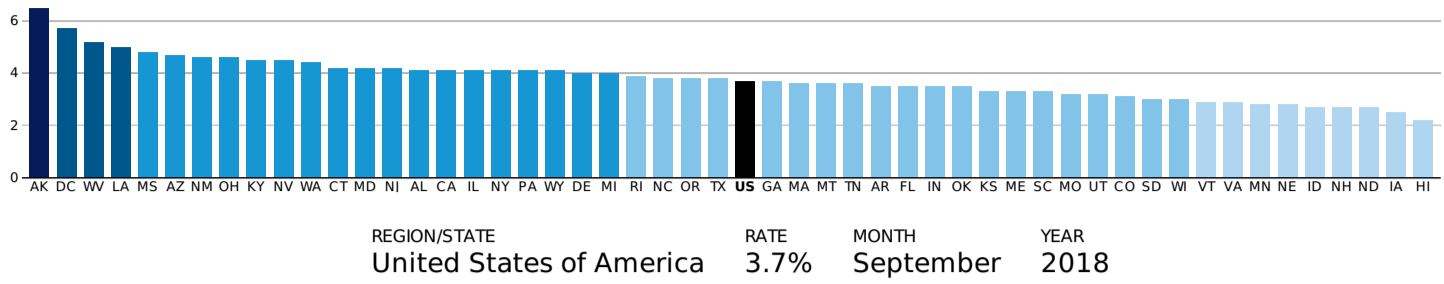


EMPLOYMENT

Breaking down state data on unemployment rates, total (nonfarm) payroll employment, and government employment.

Unemployment Rate (percent, seasonally adjusted)

The national unemployment rate was 3.7 percent as of September 2018.



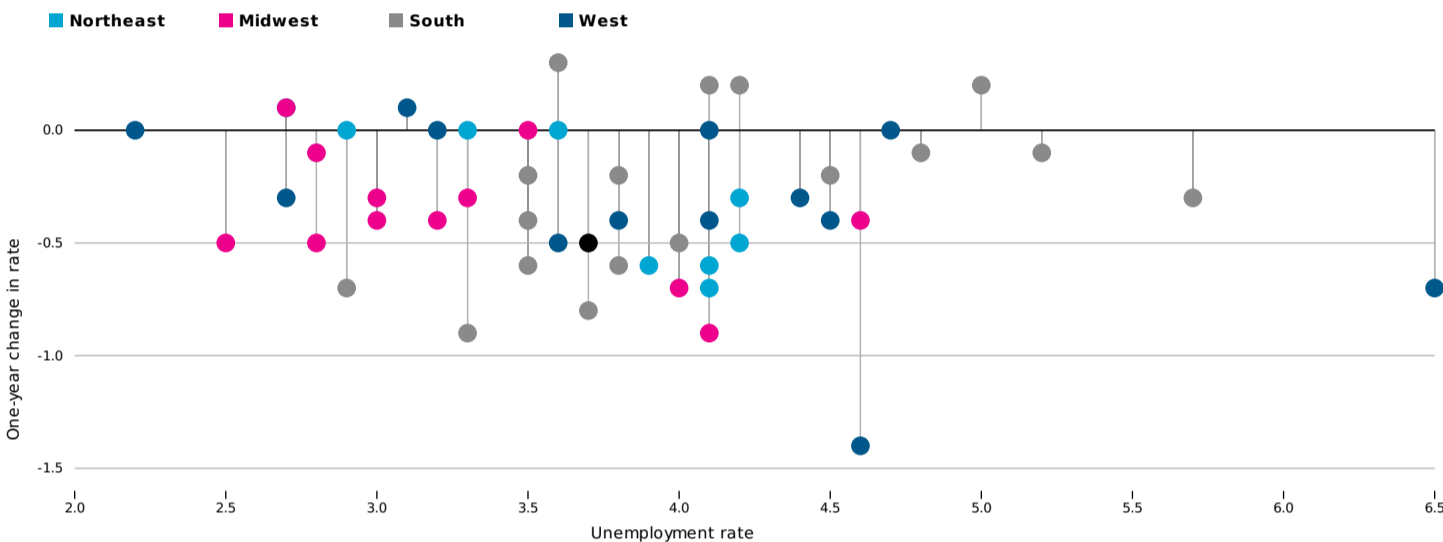
Source: Bureau of Labor Statistics. (<http://www.bls.gov/news.release/laus.t03.htm>)

The national unemployment rate was 3.7 percent in September 2018. Hawaii's 2.2 percent rate was the lowest of any state. September unemployment rates were also at or below 3.0 percent in 10 other states: Idaho, Iowa, Minnesota, Nebraska, New Hampshire, North Dakota, South Dakota, Vermont, Virginia, and Wisconsin. In total, the September unemployment rate was at or below 4.0 percent in 31 states. Alaska's 6.5 percent unemployment rate was the highest of any state. The next highest rates were in the District of Columbia (5.7 percent), West Virginia (5.2 percent), and Louisiana (5.0 percent).

Unemployment Rate: Level vs. One-Year Change

The national unemployment rate decreased 0.5 percentage points to a value of 3.7 percent between September 2017 and September 2018.

REGION/STATE: UNITED STATES OF AMERICA
 RATE: 3.7%
 CHANGE: -0.5 percentage points



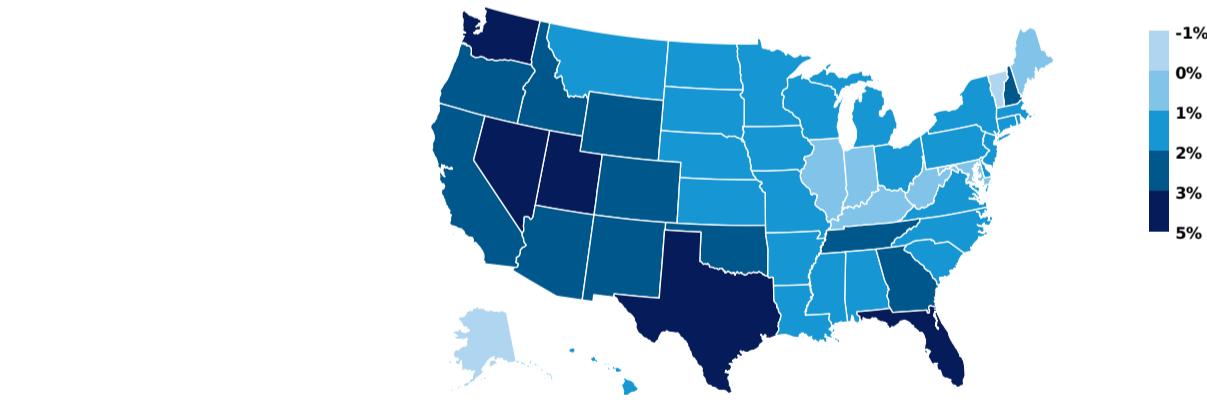
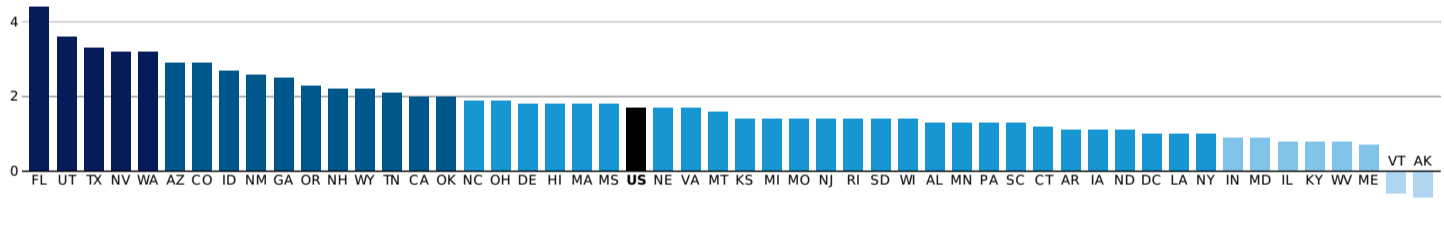
Source: Both datasets from the Bureau of Labor Statistics. (<http://www.bls.gov/news.release/laus.t03.htm>)

The national unemployment rate fell 0.5 percentage points between September 2017 and September 2018. The unemployment rate fell the most over the year in New Mexico (-1.4 percentage points) and Illinois and South Carolina (both -0.9 percentage points). The unemployment rate also fell more than 0.5 percentage points in nine other states: Alaska, Georgia, Michigan, New York, North Carolina, Oklahoma, Pennsylvania, Rhode Island, and Virginia.

The unemployment rate increased over the year in seven states: Tennessee (0.3 percentage points); Alabama, Louisiana, and Maryland (each 0.2 percentage points); and Colorado, Iowa, and Minnesota (each 0.1 percentage point).

Total Employment (percent change year over year)

Total (public and private) nonfarm payroll employment increased 1.7 percent from September 2017 to September 2018.



Source: Bureau of Labor Statistics. (<http://www.bls.gov/news.release/laus.t05.htm>)

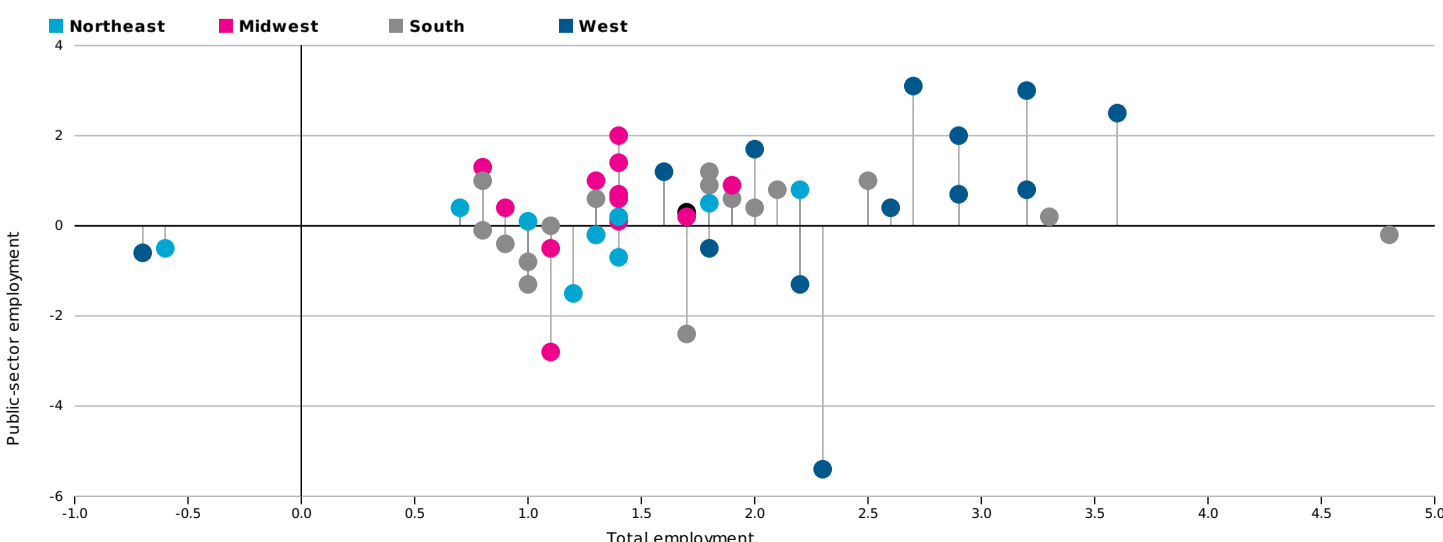
Total national (public and private) nonfarm payroll employment increased 1.7 percent from September 2017 to September 2018. Among the states, the largest year-over-year increases were in Florida (4.8 percent), Utah (3.6 percent), Texas (3.3 percent), and Nevada and Washington (both 3.2 percent). Total employment increased 2.0 percent or more in 11 additional states.

Total employment declined over the year in only two states: Georgia (-0.7 percent) and Vermont (-0.6 percent).

Total Employment vs. Public Employment

Total public-sector employment increased 0.3 percent from September 2017 to September 2018, staying well below the 1.7 percent increase in total employment.

REGION/STATE: UNITED STATES OF AMERICA
 TOTAL: 1.7%
 PUBLIC: 0.3%



Source: Both datasets from the Bureau of Labor Statistics. (<http://www.bls.gov/news.release/laus.t05.htm>)

Nationally, total public-sector employment increased 0.3 percent from September 2017 to September 2018. Among the states, public employment increased the most in Nebraska (3.1 percent) and Nevada (3.0 percent). The September public employment rate also rose 2.0 percent or more in Utah (2.5 percent) and Colorado and Kansas (both 2.0 percent). In total, 13 states saw public employment increase 1.0 percent or more over the year.

Public employment declined over the year in 16 states and the District of Columbia. The largest declines were in Oregon (-5.4 percent), Minnesota (-2.8 percent), and North Carolina (-2.4 percent). Public employment also fell more than 1.0 percent in Connecticut, the District of Columbia, and Wyoming.

[Click here for a printer-friendly PDF](#)

Note: The unemployment rate is from a US Bureau of Labor Statistics survey based on place of residence. The employment data are from a US Bureau of Labor Statistics survey based on place of work. All data are seasonally adjusted. This page is not comparable to the Bureau of Labor Statistics's press release, because that release as of September 2018 highlights only changes that are statistically significant.